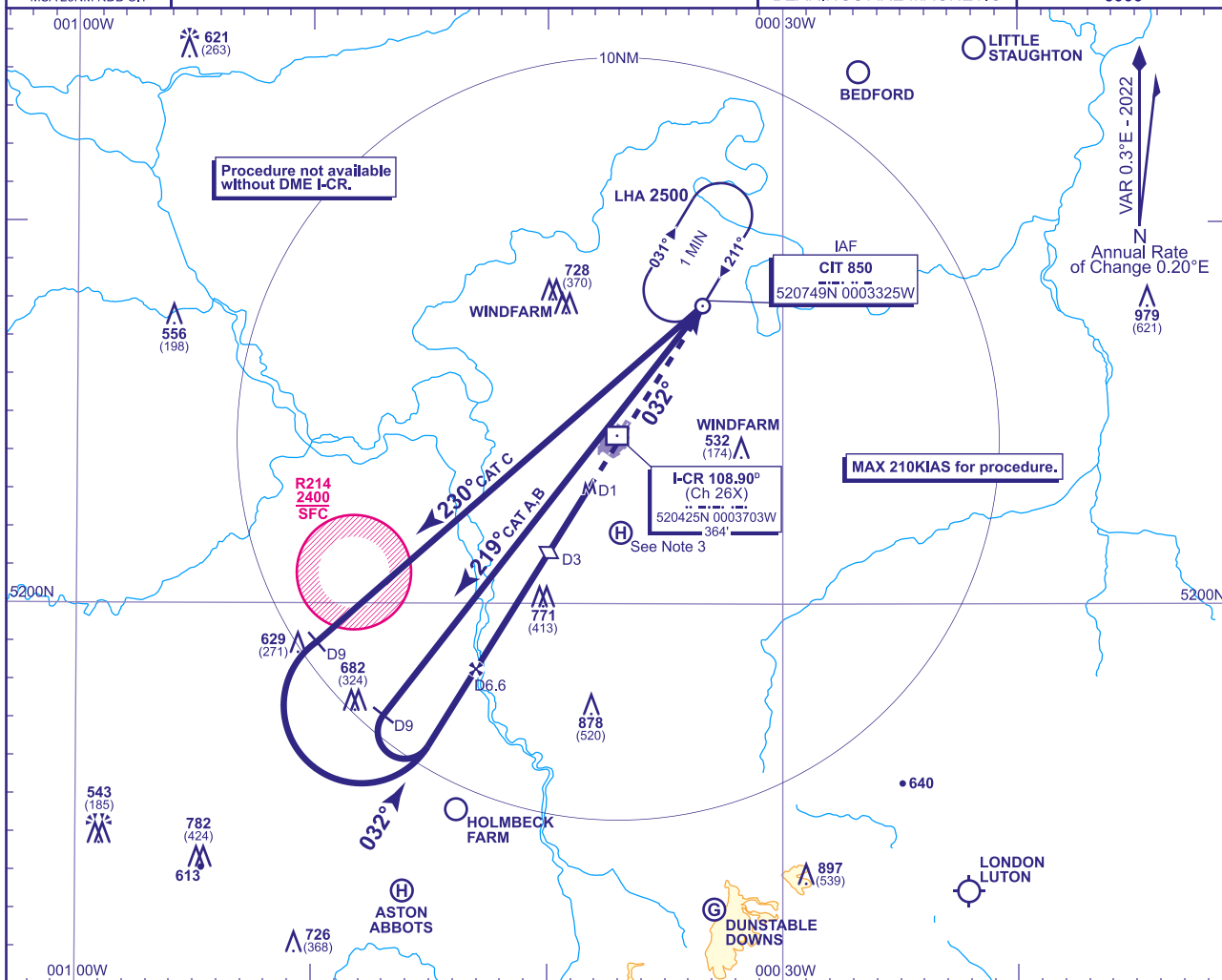


**CRANFIELD**  
**NDB(L)/DME**  
**RWY 03**  
(ACFT CAT A,B,C)



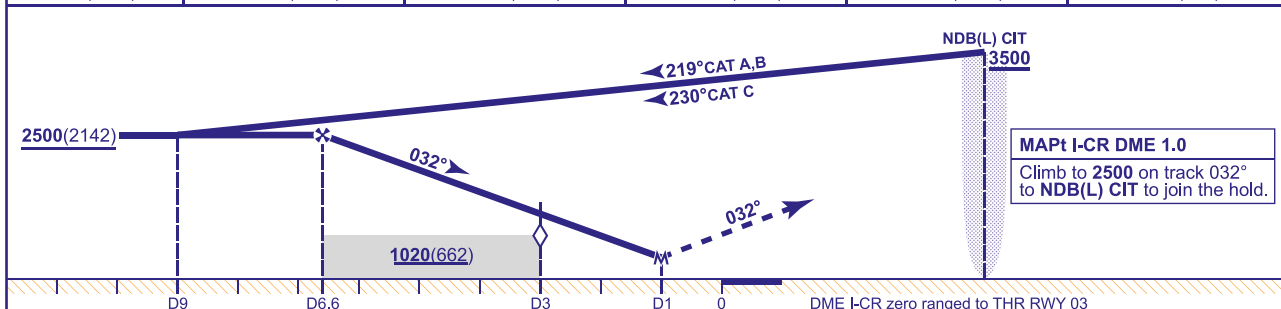
APP 122.855	CRANFIELD APPROACH	AD ELEVATION <b>360</b>
TWR 134.930, 122.855	CRANFIELD TOWER	THR ELEVATION <b>358</b>
		OBSTACLE ELEVATION <b>979 AMSL</b> (621) (ABOVE THR)
		BEARINGS ARE MAGNETIC

TRANSITION ALTITUDE  
6000



**RECOMMENDED PROFILE** Gradient 5.2%, 320FT/NM

DME I-CR	6	5	4	3 (SDF)	2
ALT(HGT)	2310(1952)	1990(1632)	1680(1322)	1360(1002)	1040(682)



Aircraft Category		A	B	C	Rate of descent	G/S KT	160	140	120	100	80
OCA (OCH)	Procedure	730(372)	730(372)	730(372)		FT/MIN	850	740	630	530	420
VM(C)OCA (OCH AAL)	Total Area	800(440)	970(610)	1150(790)							

**NOTES**

- 1 CIT NDB(L) hold restrictions: MAX holding level **5000**, MAX 180KIAS.
- 2 Intensive glider activity takes place beneath the LTMA in VMC and in IMC.
- 3 Occasional helicopter activity at Helimech Helipad (520152N 0003653W).

**CHANGE (7/25):** EGD206 REMOVED.

AERO INFO DATE 17 APR 25

AD 2-EGTC-8-2